

# reel du nord

CD piste/track #4 - pièce/tune #3, 3:14

[www.tidalwavemusic.com](http://www.tidalwavemusic.com)

Alfred Montmarquette

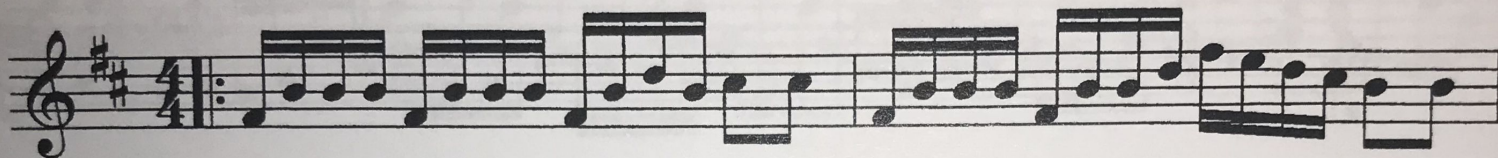
Bm

F#7

Bm

F#7

Bm



Bm

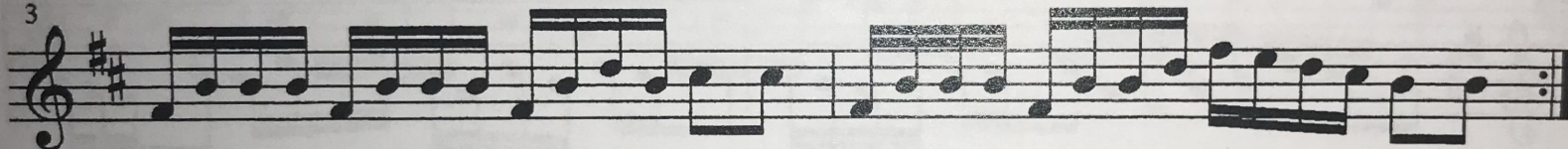
F#7

Bm

F#7

Bm

3



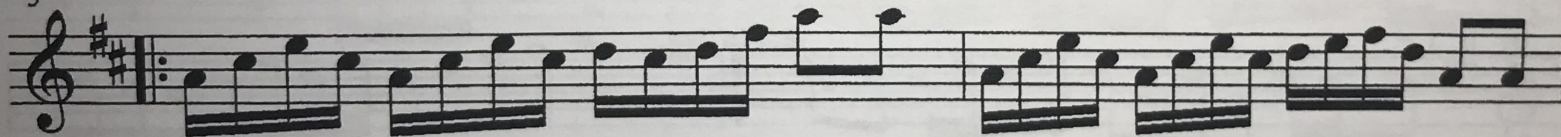
A7

D

A7

D

5



A7

D

A7

D

7

